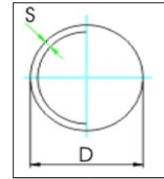


Datenblatt | Data sheet

Plastic hollow ball

Approved for shipbuilding - Germanischer Lloyd / DNV



Material

| Technical Name | Abbreviation | Characteristics | Heat resistant up to |
|----------------|--------------|-------------------------------------|----------------------|
| Polyethylene | PE | seamless, color: nature/milky white | 70 °C |
| Polyamide 12 | PA | seamless, color: nature/milky white | 100 °C |

Standard sizes (D = Diameter, S = material thickness)

| D/mm | S/mm | PE g/pc. ca. | PA g/pc. ca. | | D/mm | S/mm | PE g/pc. ca. | PA g/pc. ca. |
|------|------|--------------|--------------|--|-------|------|--------------|--------------|
| 30 | 3 | 8 | 8 | | 155 | 5 | 330 | 390 |
| 37 | 3 | 13 | 15 | | 170 | 5 | 400 | 470 |
| 39 | 3 | 13 | 15 | | 175 | 5 | 430 | 500 |
| 45 | 3 | 15 | 17 | | 185 | 6 | 570 | 670 |
| 50 | 3 | 20 | 22 | | 200 | 6 | 700 | 800 |
| 55 | 3 | 25 | 30 | | 227 | 6 | 870 | 1.000 |
| 60 | 3 | 30 | 35 | | 240 | 7 | 1150 | 1.300 |
| 65 | 3 | 35 | 40 | | 250 | 7 | 1200 | 1.400 |
| 70 | 4 | 50 | 60 | | 300 | 7 | 1800 | 2.100 |
| 75 | 4 | 60 | 70 | | 325 | 7 | 2100 | 2.500 |
| 85 | 4 | 75 | 90 | | 360 | 7 | 2600 | 3.000 |
| 90 | 4 | 90 | 100 | | 400 | 6 | 2760 | 3.200 |
| 95 | 4 | 100 | 115 | | 500 | 6 | 4500 | 5.000 |
| 100 | 4 | 110 | 125 | | 600 | 6 | 6500 | 7.400 |
| 105 | 4 | 105 | 135 | | 770 | 6 | 9000 | 10.000 |
| 120 | 5 | 200 | 230 | | 1.000 | 6 | 19.000 | 20.000 |
| 130 | 5 | 230 | 270 | | 1.980 | 7 | 80.000 | 80.000 |
| 145 | 5 | 290 | 340 | | | | | |

Manufacturing tolerance: DIN 1680-2 GTA 17, weight tolerance: +/- ca. 10 %

Special designs

- Colored (mit coloring)
- Special weights - with filling (sand, wasser, iron granules)
- Bores, pull-throughs, threaded inserts)

This data sheet is for your information only and does not represent a contractually binding document. All the values indicated are standard values and may vary depending on the variety or manufacturer.

V1.02 / January 2021

KUGEL POMPEL®
unsere welt ist kugel rund